

## LIGHTHOUSE DENTAL PRACTICE

*Together We Can Smile*

Welcome to the first edition of the Lighthouse Dental Practice patient newsletter.

Providing our patients with an outstanding service and experience is paramount to our team, and we want to ensure that you are always kept in the loop with any updates to our team and services.

### STAY CONNECTED!



Click on each individual logo to take you directly to our social platforms

## WHAT'S NEW?

*Practice Updates*

*A warm welcome to our new team members!*

Roberta Coe

*Dental Hygienist*

Roberta started her career at Lighthouse Dental Practice in 2019 where she started as a dental nurse. Roberta wanted to further her training and she qualified from the University of Essex in 2022.

Roberta provides patients with periodontal treatment (gum disease), oral hygiene advice, fissure sealants, fluoride varnish and other duties within hygienist's scope of practice, always making sure patients are treated in safe and relaxing environment.



Jane Feagan

*Treatment Coordinator*

Jane began her career in Dentistry in 2005 when she started training as a Dental Nurse and hasn't looked back since.

After nursing for 16 years, Jane jumped at the opportunity to further her career and pursue treatment coordination.

Jane works hard to ensure that patients have an outstanding journey at the practice from beginning to end, and believes that a positive can do attitude with a dash of determination can help you to achieve anything in life!

In her spare time, Jane enjoys walks in the countryside with her husband and dogs, Paddington and Bohdi, and is in the process of renovating her home.



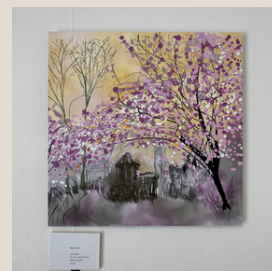
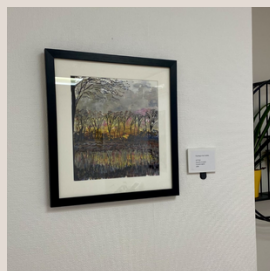


# New Collaboration

LIGHTHOUSE DENTAL PRACTICE

X

JULI FEJER ART



Our team is delighted to announce our latest collaboration with local talented artist, Juli Fejer.

Our concept is to help to promote a relaxing experience, focused on patient centred care and well-being. As always, your patient journey is our priority, and we want to offer a unique and bespoke service.

## Patient Feedback



At Lighthouse Dental Practice, your feedback is invaluable to ensure that we continue to deliver excellence and an outstanding and unique patient journey for all.

### TESTIMONIAL



"Having not been to a dentist in over 25 years. I was a bag of nerves when I arrived, But I must admit Dr Tocca was very professional and explained everything as he was going through the procedure, I would highly recommend this practice to anyone that is looking for a reliable Dentist, from the staff on reception to the Dentists upstairs, first class service, considering I have not been for 25 years plus I am now not so nervous as I use to be."

### TESTIMONIAL



"I am 70 years of age and I have always been afraid to go to the dentist. A broken tooth and my wife threatening to leave me if I did not get it replaced soon made me find a dental practice that had a good dentist who would calm my nerves so that the procedure could be completed. The Lighthouse Dental Practice its staff and nurses and of course the dentist I was assigned to have been and still are excellent professionals. I wish I had met the dental technician many years ago as every procedure I have had under him has been completely pain free and very comfortable. I highly recommend this dental practice to the whole human race."

### TESTIMONIAL



"As a nervous patient I was very worried about having my tooth removed. I was instantly put at ease by the reception staff and the dental team. They regularly stopped to check on me and were very thorough about explaining the after care. I would 100% recommend lighthouse dental (and already have)"

## Together We Can Smile



# LET'S TALK ABOUT *Invisalign*



Invisalign is a system whereby a series of clear plastic aligners are used to straighten your teeth in small increments over a period of time. The Invisalign system combines your dentist's diagnosis and subsequent prescription alongside extremely sophisticated computer graphics technology which develops your treatment plan by specifying the desired movements of your teeth over the course of your treatment. Once your treatment plan has been approved and confirmed by your dentist, a series of customised Invisalign aligners are produced made from a thermoplastic material uniquely developed for you.

Treatment times vary and depend on your unique situation and the complexity of your case. Invisalign is slower than fixed braces but is mostly used to treat fewer complex situations. Average treatment times are 12 to 18 months but can be much shorter if used to resolve simpler problems. Your aligners are replaced about every two weeks, gradually guiding your teeth into a straighter position. You can expect to see your Invisalign certified dentist, on average, every six to eight weeks for routine adjustments and to monitor your overall progress.

There are minimal risks associated with this treatment which your dentist can discuss with you in-depth during the consultation. The main consideration would be your commitment to the treatment as failure to wear the appliances for the required number of hours per day, not using the product as directed by your dentist, or missing appointments can lengthen the overall treatment time and affect the ability to achieve the desired results.

Benefits of Invisalign include:

- Offering a more aesthetic alternative to conventional braces
- Are nearly invisible
- Allow for normal daily brushing and flossing which are very often affected by conventional braces
- Do not have the metal wires or brackets associated with conventional braces and do not need tightening incrementally in the same way

*Prices start from*

£2,450.00 Single Arch

£3,900.00 Double Arch

Full Invisalign includes whitening treatment and Vivera retainers.

## ASK ABOUT OUR 0% FINANCE PLANS

Our Lighthouse Dental Finance plans provide a simple and affordable way to pay for all types of dental treatment. We offer a range of 0% and low-interest funding options enabling you to arrange the SMILE you want now at a cost to suit your pocket.



# SMILE MAKEOVER

## *Smile into Spring*



Our case of the month was recently completed by Dr Tocca.

This patient attended the practice with heavily stained teeth and advanced extensive wear, and wanted to be able to smile with confidence again.

We used the most minimally invasive approach to their care, and achieved these results with a course of take home whitening treatment, and composite bonding on the upper six teeth.

## MAINTAIN A REGULAR SCHEDULE WITH US

## *Routine Care Plans*

We believe that in the times of rising costs, that being able to budget a smaller monthly amount for your routine dental care could be beneficial for many. There is also the added bonus of being a plan member patient, of an additional discount of up to 20% off further treatment that you may require, discount for family members, and worldwide trauma insurance.

Starting from as little as £13.28 per month, joining Denplan Essentials has never been easier. Our professional team can complete an online sign up with you in practice or over the telephone.

For more information on our routine maintenance care plans, please contact our team on 01473 257379.